

**Influenza A H3N2 (A/Aichi/2/1968)  
Hemagglutinin / HA1 Antibody,  
Rabbit PAb, Antigen Affinity Purified**

Catalog Number: 11707-T38



Sino Biological  
Biological Solution Specialist

**GENERAL INFORMATION**

<b>Immunogen:</b>	Recombinant Influenza A H3N2 (A/Aichi/2/1968) Hemagglutinin / HA1 Protein (Catalog#11707-V08H1)
<b>Preparation</b>	Produced in rabbits immunized with purified, recombinant Influenza A H3N2 (A/Aichi/2/1968) Hemagglutinin / HA1 ( Catalog#11707-V08H1; AAA43178.1; Met1-Arg345). Influenza A H3N2 (A/Aichi/2/1968) Hemagglutinin / HA1 specific IgG was purified by Influenza A H3N2 (A/Aichi/2/1968) Hemagglutinin / HA1 affinity chromatography.
<b>Ig Type:</b>	Rabbit IgG
<b>Specificity:</b>	Influenza A H3N2 (A/Aichi/2/1968) Hemagglutinin / HA1
<b>Formulation:</b>	0.2 µm filtered solution in PBS
<b>Storage:</b>	This antibody can be stored at 2°C-8°C for one month without detectable loss of activity. Antibody products are stable for twelve months from date of receipt when stored at -20°C to -80°C. Preservative-Free. Avoid repeated freeze-thaw cycles.
<b>Alternative Names:</b>	Hemagglutinin,HA1

**APPLICATIONS**

<b>Applications:</b>	WB
	IHC, FCM, IF, IP et al. applications haven't been validated. (Antibody's applications haven't been validated with corresponding virus positive samples. Optimal concentrations/dilutions should be determined by the end user.)

**RECOMMENDED CONCENTRATION**

<b>Western Blot</b>	WB: 1:1000-1:5000
---------------------	-------------------

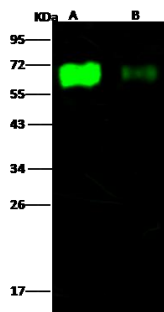
***Please Note: Optimal concentrations/dilutions should be determined by the end user.***

**Influenza A H3N2 (A/Aichi/2/1968)  
Hemagglutinin / HA1 Antibody,  
Rabbit PAb, Antigen Affinity Purified**

Catalog Number: 11707-T38



Sino Biological  
Biological Solution Specialist



Anti-Influenza A H3N2 (A/Aichi/2/1968)  
Hemagglutinin polyclonal antibody at 1:1000  
dilution.

Sample: Influenza A H3N2 (A/Aichi/2/1968)  
Hemagglutinin Recombinant Protein

Lane A: 50ng

Lane B: 10ng

Secondary

Goat Anti- Rabbit IgG H&L (Dylight 800) at  
1/10000 dilution.

Developed using the Odyssey technique.

Performed under reducing conditions.