

# PD-1/PDCD1 Antibody, Mouse MAb



Sino Biological  
Biological Solution Specialist

Catalog Number: 90305-MM09

## GENERAL INFORMATION

<b>Immunogen:</b>	Recombinant Rhesus PD-1/PDCD1 Protein (Catalog#90305-K08H)
<b>Preparation</b>	This antibody was produced from a hybridoma resulting from the fusion of a mouse myeloma with B cells obtained from a mouse immunized with purified, recombinant Rhesus PD-1/PDCD1 ( Catalog#90305-K08H; NP_001107830.1; Met1-Gln167). The IgG fraction of the cell culture supernatant was purified by Protein A affinity chromatography.
<b>Ig Type:</b>	Mouse IgG2b
<b>Clone ID:</b>	09
<b>Specificity:</b>	Rhesus PD-1/PDCD1
<b>Formulation:</b>	0.2 µm filtered solution in PBS
<b>Storage:</b>	This antibody can be stored at 2°C-8°C for one month without detectable loss of activity. Antibody products are stable for twelve months from date of receipt when stored at -20°C to -80°C. Preservative-Free. Sodium azide is recommended to avoid contamination (final concentration 0.05%-0.1%). It is toxic to cells and should be disposed of properly. Avoid repeated freeze-thaw cycles.

## APPLICATIONS

<b>Applications:</b>	IHC-P
----------------------	-------

## RECOMMENDED CONCENTRATION

<b>IHC-P</b>	IHC-P: 1:100-1:500
--------------	--------------------

**Please Note: Optimal concentrations/dilutions should be determined by the end user.**

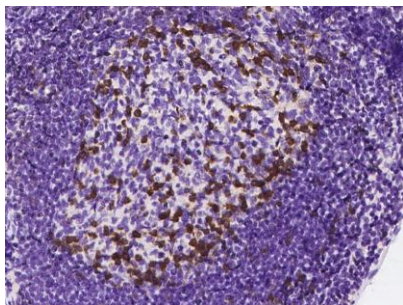
## PD-1/PDCD1 Antibody, Mouse MAb



Sino Biological  
Biological Solution Specialist

Catalog Number: 90305-MM09

---



Immunochemical staining of rhesus PDCD1 in cynomolgus lymph node with mouse monoclonal antibody at 1:200 dilution, formalin-fixed paraffin embedded sections.