

# 14-3-3 beta / YWHAB Antibody, Rabbit PAb, Antigen Affinity Purified



Sino Biological  
Biological Solution Specialist

Catalog Number: 90022-T36

## GENERAL INFORMATION

<b>Immunogen:</b>	Recombinant Cynomolgus 14-3-3 beta / YWHAB Protein (Catalog#90022-CNCE)
<b>Preparation</b>	Produced in rabbits immunized with purified, recombinant Cynomolgus 14-3-3 beta / YWHAB ( Catalog#90022-CNCE; Q4R572-2; Met2-Asn244). 14-3-3 beta / YWHAB specific IgG was purified by Cynomolgus 14-3-3 beta / YWHAB affinity chromatography.
<b>Ig Type:</b>	Rabbit IgG
<b>Specificity:</b>	Cynomolgus 14-3-3 beta / YWHAB
<b>Formulation:</b>	0.2 µm filtered solution in PBS
<b>Storage:</b>	This antibody can be stored at 2°C-8°C for one month without detectable loss of activity. Antibody products are stable for twelve months from date of receipt when stored at -20°C to -80°C. Preservative-Free. Sodium azide is recommended to avoid contamination (final concentration 0.05%-0.1%). It is toxic to cells and should be disposed of properly. Avoid repeated freeze-thaw cycles.

## APPLICATIONS

<b>Applications:</b>	WB,IP
----------------------	-------

## RECOMMENDED CONCENTRATION

<b>Western Blot</b>	WB: 1:500-1:2000
<b>Immunoprecipitation</b>	IP: 1-4 µL/mg of lysate

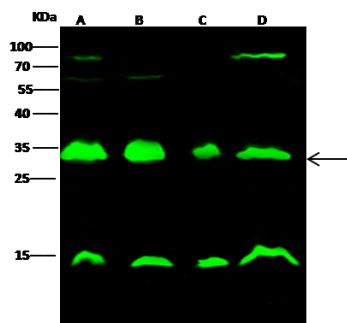
**Please Note: Optimal concentrations/dilutions should be determined by the end user.**

# 14-3-3 beta / YWHAB Antibody, Rabbit PAb, Antigen Affinity Purified

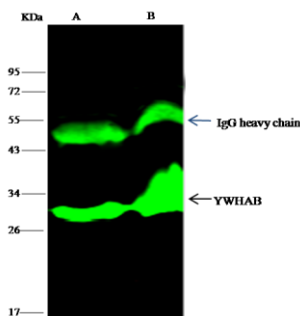


Sino Biological  
Biological Solution Specialist

Catalog Number: 90022-T36



Anti-YWHAB rabbit polyclonal antibody at 1:500 dilution  
Lane A: HepG2 Whole Cell Lysate  
Lane B: HeLa Whole Cell Lysate  
Lane C: NCI-H1299 Whole Cell Lysate  
Lane D: A431 Whole Cell Lysate  
Lysates/proteins at 30 µg per lane.  
Secondary  
Goat Anti- Rabbit IgG H&L (Dylight 800) at 1/10000 dilution.  
Developed using the Odyssey technique.  
Performed under reducing conditions.  
Predicted band size: 28 kDa  
Observed band size: 32 kDa  
(We are unsure as to the identity of these extra bands.)



cyno YWHAB was immunoprecipitated using:  
Lane A: 0.5 mg HepG2 Whole Cell Lysate  
Lane B: 0.5 mg HeLa Whole Cell Lysate

4 µL anti-cyno YWHAB rabbit polyclonal antibody and 15 µl of 50 % Protein G agarose.

Primary antibody:  
Anti-cyno YWHAB rabbit polyclonal antibody, at 1:100 dilution

Secondary antibody:  
Dylight 800-labeled antibody to rabbit IgG (H+L), at 1:5000 dilution

Developed using the odssey technique.  
Performed under reducing conditions.

Predicted band size: 32 kDa  
Observed band size: 32 kDa