

Sus scrofa (Pig) IL1B / IL-1 beta Protein

Catalog Number: 62003-WNAE



Sino Biological
Biological Solution Specialist

General Information

Gene Name Synonym:

IL1B

Protein Construction:

A DNA sequence encoding the sus scrofa IL1B (NP_999220.1) (Ala115-Pro267) was expressed with an initial Met.

Source: Sus scrofa (Pig)

Expression Host: E. coli

QC Testing

Purity: > 90 % as determined by SDS-PAGE.

Bio Activity:

Measured in a cell proliferation assay using D10.G4.1 mouse helper T cells. Symons, J.A. et al. (1987) in *Lymphokines and Interferons, a Practical Approach*. Clemens, M.J. et al. (eds): IRL Press. 272. The ED₅₀ for this effect is typically 0.08-0.4 ng/mL.

Endotoxin:

Please contact us for more information.

Stability:

Samples are stable for up to twelve months from date of receipt at -70 °C

Predicted N terminal: Met

Molecular Mass:

The recombinant sus scrofa IL1B consists 154 amino acids and predicts a molecular mass of 17.7 kDa.

Formulation:

Lyophilized from sterile PBS, pH 7.4.

Normally 5 % - 8 % trehalose, mannitol and 0.01% Tween80 are added as protectants before lyophilization. Specific concentrations are included in the hardcopy of COA. Please contact us for any concerns or special requirements.

Usage Guide

Storage:

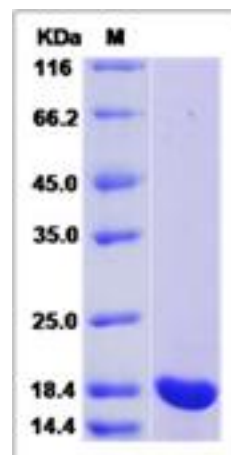
Store it under sterile conditions at -20°C to -80°C upon receiving. Recommend to aliquot the protein into smaller quantities for optimal storage.

Avoid repeated freeze-thaw cycles.

Reconstitution:

Detailed reconstitution instructions are sent along with the products.

SDS-PAGE:



Protein Description

Interleukin-1 beta (IL1 beta or IL1B) also known as catabolin, is a member of the interleukin 1 cytokine family. IL1 is a pleiotropic cytokine. It is involved in the inflammatory response, cell growth, and tissue repair in the cortex. The IL1 superfamily consists of three members, IL1A (IL1 alpha), IL1B (IL1 beta), and IL1 receptor antagonist (IL1Ra). In clinical, it has been reported that Interleukin (IL)-1 may influence Th1 / Th2 immune responsiveness and has been implicated in the establishment of successful pregnancy. Proinflammatory interleukin (IL)-1 gene polymorphisms associated with high levels of IL-1beta activity increase the risk for hypochlorhydria and distal gastric carcinoma. IL1B polymorphisms may be involved in susceptibility to SSc. Moreover, the IL2-384-G allele may be a marker for the limited phenotype of systemic sclerosis (SSc).

References

1. Kim SH, et al. (2008) Association of -31TC and -511 CT polymorphisms in the interleukin 1 beta (IL1B) promoter in Korean keratoconus patients. *Mol Vis.* 14:2109-16.
2. Wang ZC, et al. (2002) T helper 1-type immunity to trophoblast antigens in women with a history of recurrent pregnancy loss is associated with polymorphism of the IL1B promoter region. *Genes Immun.* 3(1): 38-42.
3. Mattuzzi S, et al. (2007) Association of polymorphisms in the IL1B and IL2 genes with susceptibility and severity of systemic sclerosis. *J Rheumatol.* 34(5): 997-1004.

Manufactured By Sino Biological Inc., FOR RESEARCH USE ONLY. NOT FOR USE IN HUMANS.

For US Customer: Fax: 267-657-0217

● Tel: 215-583-7898

Global Customer: Fax :+86-10-5862-8288

● Tel:+86-400-890-9989

● <http://www.sinobiological.com>