

Her2 / ERBB2 Antibody, Rabbit PAb, Antigen Affinity Purified



Sino Biological
Biological Solution Specialist

Catalog Number: 206304-T08

GENERAL INFORMATION

| | |
|---------------------|---|
| Immunogen: | E. coli-derived Human Her2 / ERBB2 fragment |
| Preparation | Produced in rabbits immunized with E. coli-derived Human Her2 / ERBB2 fragment, and purified by antigen affinity chromatography. |
| Ig Type: | Rabbit IgG |
| Specificity: | Human Her2 / ERBB2 |
| Formulation: | PBS, pH7.0 with 0.03% Proclin300 |
| Storage: | This antibody can be stored at 2°C-8°C for one month without detectable loss of activity. Antibody products are stable for twelve months from date of receipt when stored at -20°C to -80°C. Avoid repeated freeze-thaw cycles. |

APPLICATIONS

| | |
|----------------------|-------|
| Applications: | IHC-P |
|----------------------|-------|

RECOMMENDED CONCENTRATION

| | |
|--------------|--------------------|
| IHC-P | IHC-P: 1:100-1:500 |
|--------------|--------------------|

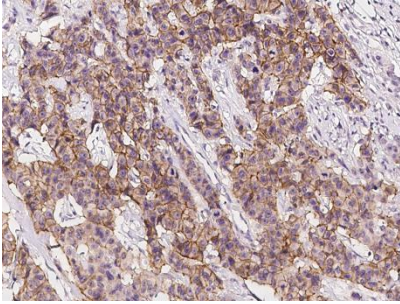
Please Note: Optimal concentrations/dilutions should be determined by the end user.

Her2 / ERBB2 Antibody, Rabbit PAb, Antigen Affinity Purified



Sino Biological
Biological Solution Specialist

Catalog Number: 206304-T08



Immunochemical staining of human Her2 in human breast carcinoma with rabbit polyclonal antibody at 1:200 dilution, formalin-fixed paraffin embedded sections.