

**Influenza H4N6 (A/Swine/Ontario/01911-1/99)  
Hemagglutinin / HA1 Antibody, Rabbit PAb,  
Antigen Affinity Purified**

Catalog Number: 11706-T54



**Sino Biological**  
Biological Solution Specialist

**GENERAL INFORMATION**

<b>Immunogen:</b>	Recombinant Influenza H4N6 (A/Swine/Ontario/01911-1/99) Hemagglutinin / HA1 Protein (Catalog#11706-V08H1)
<b>Preparation</b>	Produced in rabbits immunized with purified, recombinant Influenza H4N6 (A/Swine/Ontario/01911-1/99) Hemagglutinin / HA1 ( Catalog#11706-V08H1; AAG17429.1; Met1-Arg343). Influenza H4N6 (A/Swine/Ontario/01911-1/99) Hemagglutinin / HA1 specific IgG was purified by Influenza H4N6 (A/Swine/Ontario/01911-1/99) Hemagglutinin / HA1 affinity chromatography.
<b>Ig Type:</b>	Rabbit IgG
<b>Specificity:</b>	Influenza H4N6 (A/Swine/Ontario/01911-1/99) Hemagglutinin / HA1
<b>Formulation:</b>	0.2 µm filtered solution in PBS
<b>Storage:</b>	This antibody can be stored at 2°C-8°C for one month without detectable loss of activity. Antibody products are stable for twelve months from date of receipt when stored at -20°C to -80°C. Preservative-Free. Sodium azide is recommended to avoid contamination (final concentration 0.05%-0.1%). It is toxic to cells and should be disposed of properly. Avoid repeated freeze-thaw cycles.

**APPLICATIONS**

<b>Applications:</b>	WB,ELISA,FCM,ICC/IF,IF,IP
	(Antibody's applications have not been validated with corresponding viruses. Optimal concentrations/dilutions should be determined by the end user.)

**RECOMMENDED CONCENTRATION**

<b>Western Blot</b>	WB: 1:1000-1:5000
<b>ELISA</b>	ELISA: 1:5000-1:10000 This antibody can be used at 1:5000-1:10000 with the appropriate secondary reagents to detect Influenza H4N6 (A/Swine/Ontario/01911-1/99) Hemagglutinin / HA1.

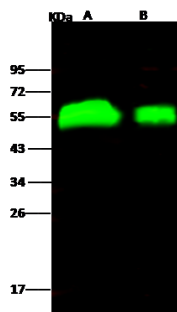
***Please Note: Optimal concentrations/dilutions should be determined by the end user.***

**Influenza H4N6 (A/Swine/Ontario/01911-1/99)  
Hemagglutinin / HA1 Antibody, Rabbit PAb,  
Antigen Affinity Purified**

Catalog Number: 11706-T54



Sino Biological  
Biological Solution Specialist



Anti-Influenza A H4N6  
(A/Swine/Ontario/01911-1/99) Hemagglutinin  
rabbit polyclonal antibody at 1:1000 dilution.  
Sample: Influenza A H4N6  
(A/Swine/Ontario/01911-1/99) Hemagglutinin  
Recombinant Protein  
Lane A: 50ng  
Lane B: 10ng

Secondary  
Goat Anti- Rabbit IgG H&L (Dylight 800) at  
1/10000 dilution.

Developed using the Odyssey technique.  
Performed under reducing conditions.