

Human Immunodeficiency Virus type 1 (HIV-1) Gag-p24 Antibody, Rabbit PAb, Antigen Affinity Purified

Catalog Number: 11695-RP02



Sino Biological
Biological Solution Specialist

GENERAL INFORMATION

Immunogen:	Recombinant HIV-1 Gag-P24 protein (Catalog#11695-V08E)
Preparation	Produced in rabbits immunized with purified, recombinant HIV-1 Gag-P24 (Catalog#11695-V08E; ACI05538.1; Pro 133-Leu 363). Gag-P24 specific IgG was purified by HIV-1 Gag-P24 affinity chromatography.
Ig Type:	Rabbit IgG
Specificity:	HIV-1 Gag-P24
Formulation:	0.2 µm filtered solution in PBS
Storage:	This antibody can be stored at 2°C-8°C for one month without detectable loss of activity. Antibody products are stable for twelve months from date of receipt when stored at -20°C to -80°C. Preservative-Free. Sodium azide is recommended to avoid contamination (final concentration 0.05%-0.1%). It is toxic to cells and should be disposed of properly. Avoid repeated freeze-thaw cycles.

APPLICATIONS

Applications:	WB,ELISA,IHC-P,FCM,ICC/IF,IF,IP
	(Antibody's applications have not been validated with corresponding viruses. Optimal concentrations/dilutions should be determined by the end user.)

RECOMMENDED CONCENTRATION

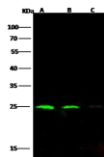
Western Blot	WB: 1:1000-1:5000
ELISA	ELISA: 1:5000-1:10000 This antibody can be used at 1:5000-1:10000 with the appropriate secondary reagents to detect HIV-1 P24.

Please Note: Optimal concentrations/dilutions should be determined by the end user.

Human Immunodeficiency Virus type 1 (HIV-1) Gag-p24 Antibody, Rabbit PAb, Antigen Affinity Purified
Catalog Number: 11695-RP02



Sino Biological
 Biological Solution Specialist



Lanes	A	B	C
Items			
Sample (Recombinant protein)	HIV P24 his (cat#11695-V09E)		
Sample Volume (ng/lane)	10	5	1
Gel	15% SDS-PAGE reducing gel		
Recommended Concentration	0.2-0.5 µg/ml		
Secondary Antibody	Dylight 800 labeled Antibody to Rabbit IgG (P14), at 1:5000 dilution.		
	Developed using Odyssey imaging system.		

© Sino Biological Inc. All rights reserved.

Anti-HIV-1 p24 Protein (group M, subtype B, strain 92418) rabbit polyclonal antibody at 1:1000 dilution

Sample: HIV-1 p24 Protein (group M, subtype B, strain 92418) Recombinant Protein

Lane A: 10ng

Lane B: 5ng

Lane C: 1ng

Secondary

Goat Anti- Rabbit IgG H&L (Dylight 800) at 1/5000 dilution.

Developed using the Odyssey technique.

Performed under reducing conditions.