

Influenza A H1N1 (A/WSN/33) Hemagglutinin / HA1 Antibody, Rabbit PAb, Antigen Affinity Purified

Catalog Number: 11692-T62



Sino Biological
Biological Solution Specialist

GENERAL INFORMATION

Immunogen:	Recombinant Influenza A H1N1 (A/WSN/33) Hemagglutinin / HA1 Protein (Catalog#11692-V08H1)
Preparation	Produced in rabbits immunized with purified, recombinant Influenza A H1N1 (A/WSN/33) Hemagglutinin / HA1 (Catalog#11692-V08H1; ACF54598.1; Met1-Arg343). Influenza A H1N1 (A/WSN/33) Hemagglutinin / HA1 specific IgG was purified by Influenza A H1N1 (A/WSN/33) Hemagglutinin / HA1 affinity chromatography.
Ig Type:	Rabbit IgG
Specificity:	Influenza A H1N1 (A/WSN/33) Hemagglutinin / HA1
Formulation:	0.2 µm filtered solution in PBS
Storage:	This antibody can be stored at 2°C-8°C for one month without detectable loss of activity. Antibody products are stable for twelve months from date of receipt when stored at -20°C to -80°C. Preservative-Free. Sodium azide is recommended to avoid contamination (final concentration 0.05%-0.1%). It is toxic to cells and should be disposed of properly. Avoid repeated freeze-thaw cycles.

APPLICATIONS

Applications:	WB,ELISA,IHC-P,FCM,ICC/IF,IF,IP
	(Antibody's applications have not been validated with corresponding viruses. Optimal concentrations/dilutions should be determined by the end user.)

RECOMMENDED CONCENTRATION

Western Blot	WB: 1:1000-1:5000
ELISA	ELISA: 1:5000-1:10000 This antibody can be used at 1:5000-1:10000 with the appropriate secondary reagents to detect Influenza A H1N1 (A/WSN/33) Hemagglutinin / HA1.

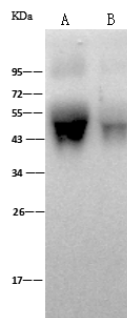
Please Note: Optimal concentrations/dilutions should be determined by the end user.

**Influenza A H1N1 (A/WSN/33)
Hemagglutinin / HA1 Antibody,
Rabbit PAb, Antigen Affinity Purified**

Catalog Number: 11692-T62



Sino Biological
Biological Solution Specialist



Anti-Influenza A H1N1 (A/WSN/33)
Hemagglutinin Protein (HA1 Subunit) rabbit
polyclonal antibody at 1:2000 dilution

Sample: Influenza A H1N1 (A/WSN/33)
Hemagglutinin Protein (HA1 Subunit)(His Tag)
Lane A: 30ng
Lane B: 10ng

Secondary
Goat Anti-Rabbit IgG (H+L)/HRP at 1/10000
dilution.

Developed using the ECL technique.
Performed under reducing conditions.