

# Influenza A H1N1 (A/Puerto Rico/8/34) Hemagglutinin / HA Antibody, Rabbit PAb, Antigen Affinity Purified

Catalog Number: 11684-T52



Sino Biological  
Biological Solution Specialist

## GENERAL INFORMATION

<b>Immunogen:</b>	Recombinant Influenza A H1N1 (A/Puerto Rico/8/34) Hemagglutinin / HA Protein (Catalog#11684-V08H)
<b>Preparation</b>	Produced in rabbits immunized with purified, recombinant Influenza A H1N1 (A/Puerto Rico/8/34) Hemagglutinin / HA ( Catalog#11684-V08H; ABD77675.1; Met1-Gln528). Influenza A H1N1 (A/Puerto Rico/8/34) Hemagglutinin / HA specific IgG was purified by Influenza A H1N1 (A/Puerto Rico/8/34) Hemagglutinin / HA affinity chromatography.
<b>Ig Type:</b>	Rabbit IgG
<b>Specificity:</b>	Influenza A H1N1 (A/Puerto Rico/8/34) Hemagglutinin / HA
<b>Formulation:</b>	0.2 µm filtered solution in PBS
<b>Storage:</b>	This antibody can be stored at 2°C-8°C for one month without detectable loss of activity. Antibody products are stable for twelve months from date of receipt when stored at -20°C to -80°C. Preservative-Free. Sodium azide is recommended to avoid contamination (final concentration 0.05%-0.1%). It is toxic to cells and should be disposed of properly. Avoid repeated freeze-thaw cycles.

## APPLICATIONS

<b>Applications:</b>	WB,ELISA,IP
	(Antibody's applications have not been validated with corresponding viruses. Optimal concentrations/dilutions should be determined by the end user.)

## RECOMMENDED CONCENTRATION

<b>Western Blot</b>	WB: 1:1000-1:5000
<b>ELISA</b>	ELISA: 1:5000-1:10000 This antibody can be used at 1:5000-1:10000 with the appropriate secondary reagents to detect Influenza A H1N1 (A/Puerto Rico/8/34) Hemagglutinin / HA.

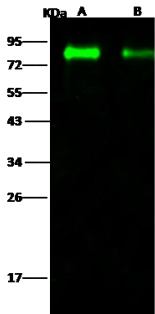
**Please Note: Optimal concentrations/dilutions should be determined by the end user.**

# Influenza A H1N1 (A/Puerto Rico/8/34) Hemagglutinin / HA Antibody, Rabbit PAb, Antigen Affinity Purified

Catalog Number: 11684-T52



Sino Biological  
Biological Solution Specialist



Anti-Influenza A H1N1 (A/Puerto Rico/8/34)  
Hemagglutinin / HA polyclonal antibody at  
1:1000 dilution.  
Sample: Influenza A H1N1 (A/Puerto Rico/8/34)  
Hemagglutinin / HA Recombinant Protein  
Lane A: 50ng  
Lane B: 10ng

Secondary  
Goat Anti- Rabbit IgG H&L (Dylight 800) at  
1/10000 dilution.

Developed using the Odyssey technique.  
Performed under reducing conditions.