

# 14-3-3 eta / YWHAH Antibody, Rabbit PAb, Antigen Affinity Purified



Sino Biological  
Biological Solution Specialist

Catalog Number: 10847-RP02

## GENERAL INFORMATION

<b>Immunogen:</b>	Recombinant Human 14-3-3 eta / YWHAH protein (Catalog#10847-H09E)
<b>Preparation</b>	Produced in rabbits immunized with purified, recombinant Human 14-3-3 eta / YWHAH (rh 14-3-3 eta / YWHAH; Catalog#10847-H09E; Q04917; Gly2-Asn246). 14-3-3 eta / YWHAH specific IgG was purified by Human 14-3-3 eta / YWHAH affinity chromatography.
<b>Ig Type:</b>	Rabbit IgG
<b>Specificity:</b>	Human 14-3-3 eta / YWHAH
<b>Formulation:</b>	0.2 µm filtered solution in PBS
<b>Storage:</b>	This antibody can be stored at 2°C-8°C for one month without detectable loss of activity. Antibody products are stable for twelve months from date of receipt when stored at -20°C to -80°C. Preservative-Free. Sodium azide is recommended to avoid contamination (final concentration 0.05%-0.1%). It is toxic to cells and should be disposed of properly. Avoid repeated freeze-thaw cycles.

## APPLICATIONS

<b>Applications:</b>	WB,ELISA,IP
----------------------	-------------

## RECOMMENDED CONCENTRATION

<b>Western Blot</b>	WB: 1:500-1:2000
<b>Immunoprecipitation</b>	IP: 1-4 µL/mg of lysate
<b>ELISA</b>	ELISA: 1:5000-1:10000 This antibody can be used at 1:5000-1:10000 with the appropriate secondary reagents to detect Human 14-3-3 eta / YWHAH.

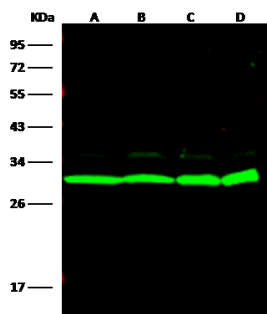
**Please Note: Optimal concentrations/dilutions should be determined by the end user.**

# 14-3-3 eta / YWHAH Antibody, Rabbit PAb, Antigen Affinity Purified



Sino Biological  
Biological Solution Specialist

Catalog Number: 10847-RP02



Anti-YWHAH rabbit polyclonal antibody at 1:500 dilution

Lane A: U937 Whole Cell Lysate  
Lane B: 293T Whole Cell Lysate  
Lane C: Jurkat Whole Cell Lysate  
Lane D: K562 Whole Cell Lysate

Lysates/proteins at 30 µg per lane.

Secondary

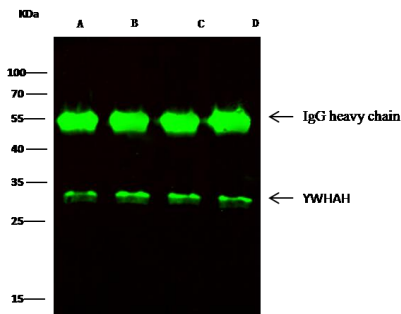
Goat Anti-Rabbit IgG H&L (Dylight800) at 1/10000 dilution.

Developed using the Odyssey technique.

Performed under reducing conditions.

Predicted band size: 33 kDa

Observed band size: 31 kDa



YWHAH was immunoprecipitated using:

Lane A: 0.5 mg 293T Whole Cell Lysate  
Lane B: 0.5 mg Jurkat Whole Cell Lysate  
Lane C: 0.5 mg k562 Whole Cell Lysate  
Lane D: 0.5 mg NIH-3T3 Whole Cell Lysate

2 µL anti-YWHAH rabbit polyclonal antibody and 15 µl of 50 % Protein G agarose.

Primary antibody:

Anti-YWHAH rabbit polyclonal antibody, at 1:2000 dilution

Secondary antibody:

Dylight 800-labeled antibody to rabbit IgG (H+L), at 1:5000 dilution

Developed using the odssey technique.

Performed under reducing conditions.

Predicted band size: 28 kDa

Observed band size: 28 kDa