

# 14-3-3 beta / YWHAB Antibody, Mouse MAb



Sino Biological  
Biological Solution Specialist

Catalog Number: 10843-MM03

## GENERAL INFORMATION

<b>Immunogen:</b>	Recombinant Human 14-3-3 beta / YWHAB protein (Catalog#10843-H09E)
<b>Preparation</b>	This antibody was produced from a hybridoma resulting from the fusion of a mouse myeloma with B cells obtained from a mouse immunized with purified, recombinant Human 14-3-3 beta / YWHAB (rh 14-3-3 beta / YWHAB; Catalog#10843-H09E; NP_003395.1; Met1-Asn246). The IgG fraction of the cell culture supernatant was purified by Protein A affinity chromatography.
<b>Ig Type:</b>	Mouse IgG2b
<b>Clone ID:</b>	03
<b>Specificity:</b>	Human 14-3-3 beta / YWHAB Has cross-reactivity in ELISA with Cynomolgus YWHAB No cross activity in ELISA with E.coli cell lysate (BL21 cell line)
<b>Formulation:</b>	0.2 µm filtered solution in PBS with 5% trehalose
<b>Storage:</b>	This antibody can be stored at 2°C-8°C for one month without detectable loss of activity. Antibody products are stable for twelve months from date of receipt when stored at -20°C to -80°C. Preservative-Free. Sodium azide is recommended to avoid contamination (final concentration 0.05%-0.1%). It is toxic to cells and should be disposed of properly. Avoid repeated freeze-thaw cycles.

## APPLICATIONS

<b>Applications:</b>	ELISA,FCM,ICC/IF,IF
----------------------	---------------------

## RECOMMENDED CONCENTRATION

<b>ICC/IF</b>	ICC/IF: 1:20-1:100
<b>Flow Cytometry</b>	FCM: 1:25-1:100
<b>ELISA</b>	ELISA: 1:1000-1:2000 This antibody can be used at 1:1000-1:2000 with the appropriate secondary reagents to detect Human YWHAB.

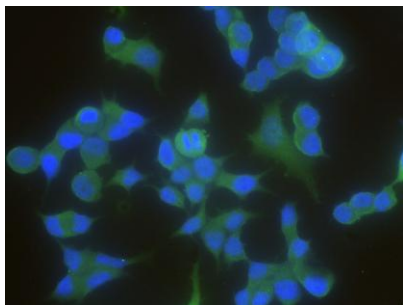
**Please Note: Optimal concentrations/dilutions should be determined by the end user.**

## 14-3-3 beta / YWHAB Antibody, Mouse MAb

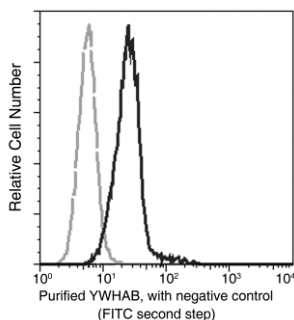


Sino Biological  
Biological Solution Specialist

Catalog Number: 10843-MM03



Immunofluorescence staining of Human YWHAB in MCF7 cells. Cells were fixed with 4% PFA, blocked with 10% serum, and incubated with Mouse anti-Human YWHAB monoclonal antibody (1:60) at 4 °C overnight. Then cells were stained with the Alexa Fluor® 488-conjugated Goat Anti-mouse IgG secondary antibody (green) and counterstained with DAPI (blue). Positive staining was localized to cytoplasm.



Flow cytometric analysis of Human YWHAB expression on Molt-4 cells. The cells were treated according to manufacturer's manual (BD Pharmingen™ Cat. No. 554714), stained with purified anti-Human YWHAB, then a FITC-conjugated second step antibody. The fluorescence histograms were derived from gated events with the forward and side light-scatter characteristics of intact cells.

Flow cytometry was performed on a BD FACSCalibur flow cytometry system. Please refer to [www.sinobiological.com/Flow-Cytometry-FACS-Protocols-a-750.html](http://www.sinobiological.com/Flow-Cytometry-FACS-Protocols-a-750.html) for technical protocols.