

14-3-3 sigma / Stratifin / YWHAS Antibody, Mouse MAb



Sino Biological
Biological Solution Specialist

Catalog Number: 10838-MM02

GENERAL INFORMATION

Immunogen:	Recombinant Human 14-3-3 sigma / Stratifin / YWHAS Protein (Catalog#10838-HNCE)
Preparation	This antibody was produced from a hybridoma resulting from the fusion of a mouse myeloma with B cells obtained from a mouse immunized with purified, recombinant Human 14-3-3 sigma / Stratifin / YWHAS (rh 14-3-3 sigma / Stratifin / YWHAS; Catalog#10838-HNCE; NP_006133.1; Met1-Ser248). The IgG fraction of the cell culture supernatant was purified by Protein A affinity chromatography.
Ig Type:	Mouse IgG1
Clone ID:	02
Specificity:	Human 14-3-3 sigma / Stratifin / YWHAS
Formulation:	0.2 µm filtered solution in PBS
Storage:	This antibody can be stored at 2°C-8°C for one month without detectable loss of activity. Antibody products are stable for twelve months from date of receipt when stored at -20°C to -80°C. Preservative-Free. Sodium azide is recommended to avoid contamination (final concentration 0.05%-0.1%). It is toxic to cells and should be disposed of properly. Avoid repeated freeze-thaw cycles.

APPLICATIONS

Applications:	FCM
----------------------	-----

RECOMMENDED CONCENTRATION

Flow Cytometry	FCM: 1:25-1:100
-----------------------	-----------------

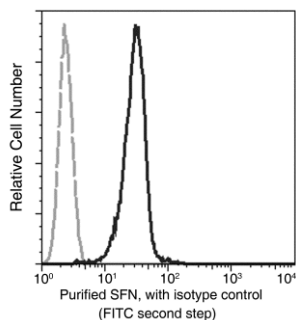
Please Note: Optimal concentrations/dilutions should be determined by the end user.

14-3-3 sigma / Stratifin / YWHAS Antibody, Mouse MAb



Sino Biological
Biological Solution Specialist

Catalog Number: 10838-MM02



Flow cytometric analysis of Human SFN expression on HeLa cells. Cells were stained with purified anti-Human SFN, then a FITC-conjugated second step antibody. The fluorescence histograms were derived from gated events with the forward and side light-scatter characteristics of intact cells.

Flow cytometry was performed on a BD FACSCalibur flow cytometry system. Please refer to www.sinobiological.com/Flow-Cytometry-FACS-Protocols-a-750.html for technical protocols.