

# HER2 / ErbB2 / CD340 Antibody, Rabbit PAb, Antigen Affinity Purified



Sino Biological  
Biological Solution Specialist

Catalog Number: 100271-T32

## GENERAL INFORMATION

<b>Immunogen:</b>	A synthetic peptide corresponding to the center region of the human ERBB2
<b>Preparation</b>	Produced in rabbits immunized with A synthetic peptide corresponding to the center region of the human ERBB2 , and purified by antigen affinity chromatography.
<b>Ig Type:</b>	Rabbit IgG
<b>Specificity:</b>	Human Mouse, Rat (Species predicted to react based on 100% sequence homology)
<b>Formulation:</b>	0.2 µm filtered solution in PBS
<b>Storage:</b>	This antibody can be stored at 2°C-8°C for one month without detectable loss of activity. Antibody products are stable for twelve months from date of receipt when stored at -20°C to -80°C. Preservative-Free. Sodium azide is recommended to avoid contamination (final concentration 0.05%-0.1%). It is toxic to cells and should be disposed of properly. Avoid repeated freeze-thaw cycles.

## APPLICATIONS

<b>Applications:</b>	WB
----------------------	----

## RECOMMENDED CONCENTRATION

<b>Western Blot</b>	WB: 1:500-1:1000
---------------------	------------------

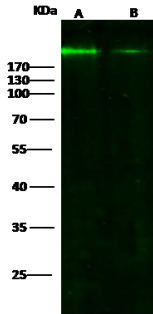
**Please Note: Optimal concentrations/dilutions should be determined by the end user.**

# HER2 / ErbB2 / CD340 Antibody, Rabbit PAb, Antigen Affinity Purified



Sino Biological  
Biological Solution Specialist

Catalog Number: 100271-T32



Anti-ERBB2 rabbit polyclonal antibody at 1:500 dilution

Lane A: SKBR3 Whole Cell Lysate

Lane B: HEK293 Whole Cell Lysate

Lysates/proteins at 30 µg per lane.

Secondary

Goat Anti-Rabbit IgG H&L (Dylight800) at 1/10000 dilution.

Developed using the Odyssey technique.

Performed under reducing conditions.

Predicted band size:138 kDa

Observed band size:200 kDa