

4E-BP1 / EIF4EBP1 Antibody, Rabbit MAb

Catalog Number: 10022-R058

EliteRmab® is a registered trademark of Sino Biological Inc.

GENERAL INFORMATION	
Immunogen:	Recombinant Human 4E-BP1 / EIF4EBP1 protein (Catalog#10022-H07E)
Preparation	This antibody was obtained from a rabbit immunized with purified, recombinant Human 4E-BP1 / EIF4EBP1 (rh 4E-BP1 / EIF4EBP1; Catalog#10022-H07E; NP_004086.1; Ser 2-Ile 118).
Ig Type:	Rabbit IgG
Clone ID:	058
Specificity:	Human 4E-BP1 / EIF4EBP1
Formulation:	0.2 µm filtered solution in PBS with 5% trehalose
Storage:	This antibody can be stored at 2°C-8°C for one month without detectable loss of activity. Antibody products are stable for twelve months from date of receipt when stored at -20°C to -80°C. Preservative-Free. Sodium azide is recommended to avoid contamination (final concentration 0.05%-0.1%). It is toxic to cells and should be disposed of properly. Avoid repeated freeze-thaw cycles.
APPLICATIONS	
Applications:	WB,ELISA
RECOMMENDED CONCENTRATION	
Western Blot	WB: 1:1000-1:5000
ELISA	ELISA: 1:5000-1:10000 This antibody can be used at 1:5000-1:10000 with the appropriate secondary reagents to detect Human 4EBP1.

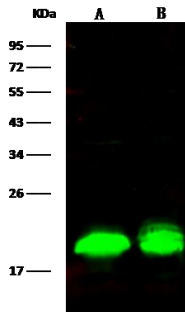
Please Note: Optimal concentrations/dilutions should be determined by the end user.

4E-BP1 / EIF4EBP1 Antibody, Rabbit MAb



Catalog Number: 10022-R058

EliteRmab® is a registered trademark of Sino Biological Inc.



Anti-4EBP1 rabbit monoclonal antibody at 1:1000 dilution

Lane A: 293T Whole Cell Lysate

Lane B: K562 Whole Cell Lysate

Lysates/proteins at 30 µg per lane.

Secondary

Goat Anti-Rabbit IgG H&L (Dylight800) at 1/10000 dilution.

Developed using the Odyssey technique.

Performed under reducing conditions.

Predicted band size:13 kDa

Observed band size:20 kDa