

4E-BP1 / EIF4EBP1 Antibody, Rabbit MAb

Catalog Number: 10022-R007

EliteRmab® is a registered trademark of Sino Biological Inc.

GENERAL INFORMATION	
Immunogen:	Recombinant Human 4E-BP1 / EIF4EBP1 protein (Catalog#10022-H07E)
Preparation	This antibody was obtained from a rabbit immunized with purified, recombinant Human 4E-BP1 / EIF4EBP1 (rh 4E-BP1 / EIF4EBP1; Catalog#10022-H07E; NP_004086.1; Ser2-Ile118).
Ig Type:	Rabbit IgG
Clone ID:	007
Specificity:	Human 4E-BP1 / EIF4EBP1
Formulation:	0.2 µm filtered solution in PBS
Storage:	This antibody can be stored at 2°C-8°C for one month without detectable loss of activity. Antibody products are stable for twelve months from date of receipt when stored at -20°C to -80°C. Preservative-Free. Sodium azide is recommended to avoid contamination (final concentration 0.05%-0.1%). It is toxic to cells and should be disposed of properly. Avoid repeated freeze-thaw cycles.
APPLICATIONS	
Applications:	ICC/IF,IF
RECOMMENDED CONCENTRATION	
ICC/IF	ICC/IF: 1:20-1:100

Please Note: Optimal concentrations/dilutions should be determined by the end user.

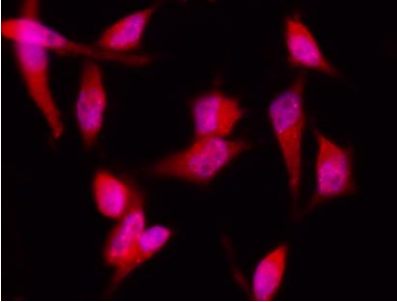
4E-BP1 / EIF4EBP1 Antibody, Rabbit MAb

Catalog Number: 10022-R007



Sino Biological
Biological Solution Specialist

EliteRmab® is a registered trademark of Sino Biological Inc.



Immunofluorescence staining of Human 4EBP1 in HeLa cells. Cells were fixed with 4% PFA, permeabilized with 0.3% Triton X-100 in PBS, blocked with 10% serum, and incubated with rabbit anti-Human 4EBP1 monoclonal antibody (1:60) at 37°C 1 hour. Then cells were stained with the Alexa Fluor® 594-conjugated Goat Anti-rabbit IgG secondary antibody (red) and counterstained with DAPI (blue). Positive staining was localized to nucleus and cytoplasm.