

4E-BP1 / EIF4EBP1 Antibody, Mouse MAb



Sino Biological
Biological Solution Specialist

Catalog Number: 10022-MM05

GENERAL INFORMATION

Immunogen:	Recombinant Human 4E-BP1 / EIF4EBP1 Protein (Catalog#10022-H07E)
Preparation	This antibody was produced from a hybridoma resulting from the fusion of a mouse myeloma with B cells obtained from a mouse immunized with purified, recombinant Human 4E-BP1 / EIF4EBP1 (rh 4E-BP1 / EIF4EBP1; Catalog#10022-H07E; Ser 2-Ile 118; NP_004086.1). The IgG fraction of the cell culture supernatant was purified by Protein A affinity chromatography.
Ig Type:	Mouse IgG1
Clone ID:	5F3G9
Specificity:	Human 4E-BP1 / EIF4EBP1
	No cross-reactivity in ELISA with E.coli cell lysate
Formulation:	0.2 µm filtered solution in PBS with 5% trehalose
Storage:	This antibody can be stored at 2°C-8°C for one month without detectable loss of activity. Antibody products are stable for twelve months from date of receipt when stored at -20°C to -80°C. Preservative-Free. Sodium azide is recommended to avoid contamination (final concentration 0.05%-0.1%). It is toxic to cells and should be disposed of properly. Avoid repeated freeze-thaw cycles.

APPLICATIONS

Applications: WB,ELISA,ICC/IF,IF

RECOMMENDED CONCENTRATION

ICC/IF	ICC/IF: 1:100-1:500
Western Blot	WB: 1:500-1:1000
ELISA	ELISA: 1:5000-1:10000 This antibody can be used at 1:5000-1:10000 with the appropriate secondary reagents to detect 4EBP1.

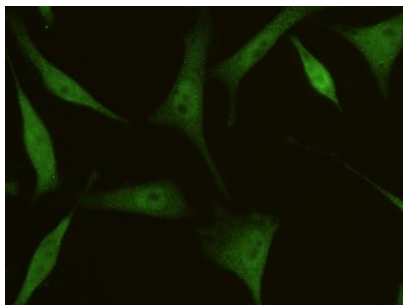
Please Note: Optimal concentrations/dilutions should be determined by the end user.

4E-BP1 / EIF4EBP1 Antibody, Mouse MAb

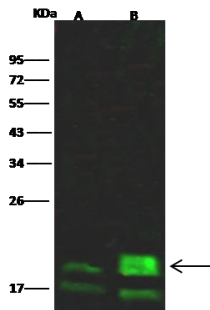


Sino Biological
Biological Solution Specialist

Catalog Number: 10022-MM05



Immunofluorescence staining of Human 4EBP1 in HeLa cells. Cells were fixed with 4% PFA, permeabilized with 0.3% Triton X-100 in PBS, blocked with 10% serum, and incubated with Mouse anti-Human 4EBP1 monoclonal antibody (1:300) at 37°C 1 hour. Then cells were stained with the Alexa Fluor® 488-conjugated Goat Anti-mouse IgG secondary antibody (green) and counterstained with DAPI (blue). Positive staining was localized to nucleus and cytoplasm.



Anti-4EBP1 mouse monoclonal antibody at 1:500 dilution

Lane A: A431 Whole Cell Lysate
Lane B: K562 Whole Cell Lysate

Lysates/proteins at 30 µg per lane.
Secondary Goat Anti-Mouse IgG H&L (Dylight800) at 1/15000 dilution.

Developed using the Odyssey technique.
Performed under reducing conditions.

Predicted band size:13 kDa
Observed band size:13 kDa