

4EBP1 Antibody, Mouse MAb



Sino Biological
Biological Solution Specialist

Catalog Number: 10022-MM01T

GENERAL INFORMATION

Immunogen:	Recombinant Human 4EBP1 Protein (Catalog#10022-H07E)
Preparation	This antibody was produced from a hybridoma resulting from the fusion of a mouse myeloma with B cells obtained from a mouse immunized with purified, recombinant Human 4EBP1 (rh 4EBP1; Catalog#10022-H07E; NP_004086.1; Ser2-Ile118). The IgG fraction of the cell culture supernatant was purified by Protein A affinity chromatography.
Ig Type:	Mouse IgG1
Clone ID:	01
Specificity:	Human 4EBP1
Formulation:	0.2 µm filtered solution in PBS
Storage:	This antibody can be stored at 2°C-8°C for one month without detectable loss of activity. Antibody products are stable for twelve months from date of receipt when stored at -20°C to -80°C. Preservative-Free. Sodium azide is recommended to avoid contamination (final concentration 0.05%-0.1%). It is toxic to cells and should be disposed of properly. Avoid repeated freeze-thaw cycles.

APPLICATIONS

Applications: ICC/IF,IF

RECOMMENDED CONCENTRATION

ICC/IF ICC/IF: 1:20-1:100

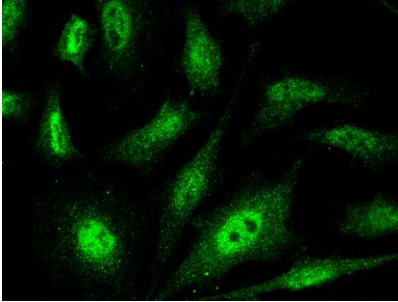
Please Note: Optimal concentrations/dilutions should be determined by the end user.

4EBP1 Antibody, Mouse MAb



Sino Biological
Biological Solution Specialist

Catalog Number: 10022-MM01T



Immunofluorescence staining of 4EBP1 in HeLa cells. Cells were fixed with 4% PFA, permeabilized with 0.3% Triton X-100 in PBS, blocked with 10% serum, and incubated with mouse anti-Human 4EBP1 monoclonal antibody (dilution ratio 1:60) at 4°C overnight. Then cells were stained with the Alexa Fluor® 488-conjugated Goat Anti-mouse IgG secondary antibody (green).