

# VEGFR2 / Flk-1 / CD309 / KDR Antibody, Rabbit PAb, Antigen Affinity Purified

Catalog Number: 10012-T24



Sino Biological  
Biological Solution Specialist

## GENERAL INFORMATION

<b>Immunogen:</b>	Recombinant Human VEGFR2 / Flk-1 / CD309 / KDR protein (Catalog#10012-H08H)
<b>Preparation</b>	Produced in rabbits immunized with purified, recombinant Human VEGFR2 / Flk-1 / CD309 / KDR (rh VEGFR2 / Flk-1 / CD309 / KDR; Catalog#10012-H08H; NP_002244.1; Met1-Glu764). VEGFR2 / Flk-1 / CD309 / KDR specific IgG was purified by Human VEGFR2 / Flk-1 / CD309 / KDR affinity chromatography.
<b>Ig Type:</b>	Rabbit IgG
<b>Specificity:</b>	Human VEGFR2 / Flk-1 / CD309 / KDR
<b>Formulation:</b>	0.2 µm filtered solution in PBS
<b>Storage:</b>	This antibody can be stored at 2°C-8°C for one month without detectable loss of activity. Antibody products are stable for twelve months from date of receipt when stored at -20°C to -80°C. Preservative-Free. Sodium azide is recommended to avoid contamination (final concentration 0.05%-0.1%). It is toxic to cells and should be disposed of properly. Avoid repeated freeze-thaw cycles.

## APPLICATIONS

<b>Applications:</b>	ELISA, IHC-P
----------------------	--------------

## RECOMMENDED CONCENTRATION

<b>IHC-P</b>	IHC-P: 1:500-1:2000
<b>ELISA</b>	ELISA: 1:5000-1:10000 This antibody can be used at 1:5000-1:10000 with the appropriate secondary reagents to detect Human VEGFR2 / Flk-1 / CD309 / KDR.

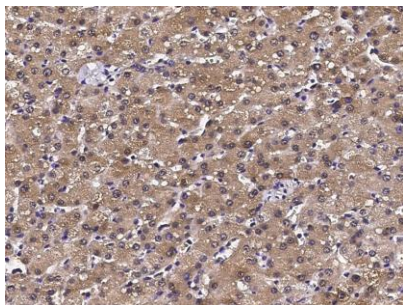
**Please Note: Optimal concentrations/dilutions should be determined by the end user.**

**VEGFR2 / Flk-1 / CD309 / KDR  
Antibody, Rabbit PAb, Antigen  
Affinity Purified**

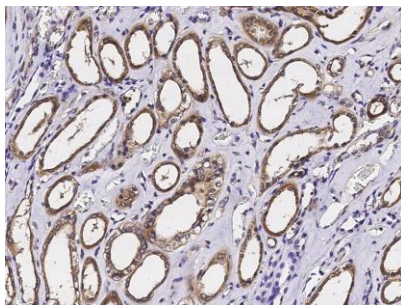
Catalog Number: 10012-T24



Sino Biological  
Biological Solution Specialist



Immunohistochemical staining of human VEGFR2 in human liver with rabbit polyclonal antibody (1:1000, formalin-fixed paraffin embedded sections).



Immunohistochemical staining of human VEGFR2 in human kidney with rabbit polyclonal antibody (1:1000, formalin-fixed paraffin embedded sections).