

HER2 / ERBB2 Antibody, Rabbit PAb, Antigen Affinity Purified



Sino Biological
Biological Solution Specialist

Catalog Number: 10004-T48

GENERAL INFORMATION

Immunogen:	Recombinant Human HER2 / ERBB2 Protein (Catalog#10004-H08H)
Preparation	Produced in rabbits immunized with purified, recombinant Human HER2 / ERBB2 (rh HER2 / ERBB2; Catalog#10004-H08H; NP_004439.2; Met1-Thr652). HER2 / ERBB2 specific IgG was purified by Human HER2 / ERBB2 affinity chromatography.
Ig Type:	Rabbit IgG
Specificity:	Human HER2 / ERBB2
Formulation:	0.2 µm filtered solution in PBS
Storage:	This antibody can be stored at 2°C-8°C for one month without detectable loss of activity. Antibody products are stable for twelve months from date of receipt when stored at -20°C to -80°C. Preservative-Free. Sodium azide is recommended to avoid contamination (final concentration 0.05%-0.1%). It is toxic to cells and should be disposed of properly. Avoid repeated freeze-thaw cycles.

APPLICATIONS

Applications:	WB,ELISA
----------------------	----------

RECOMMENDED CONCENTRATION

Western Blot	WB: 1:500-1:2000
ELISA	ELISA: 1:5000-1:10000 This antibody can be used at 1:5000-1:10000 with the appropriate secondary reagents to detect Human HER2 / ERBB2.

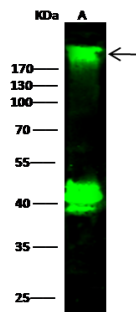
Please Note: Optimal concentrations/dilutions should be determined by the end user.

HER2 / ERBB2 Antibody, Rabbit PAb, Antigen Affinity Purified



Sino Biological
Biological Solution Specialist

Catalog Number: 10004-T48



Anti-ErbB2 rabbit polyclonal antibody at 1:500 dilution

Lane A: SKBR3 Whole Cell Lysate

Lysates/proteins at 30 µg per lane.

Secondary

Goat Anti-Rabbit IgG H&L (Dylight800) at 1/10000 dilution.

Developed using the Odyssey technique.

Performed under reducing conditions.

Predicted band size:138 kDa

Observed band size:200 kDa

(We are unsure as to the identity of these extra bands.)