

HER2 / ErbB2 / CD340 Antibody, Rabbit PAb



Sino Biological
Biological Solution Specialist

Catalog Number: 10004-RP03

GENERAL INFORMATION	
Immunogen:	Recombinant Human ErbB2 protein (Catalog#10004-H08H)
Preparation	Produced in rabbits immunized with purified, recombinant Human ErbB2 / HER2 extracellular domain (rhErbB2; Catalog#10004-H08H; NP_004439.2; Met 1-Thr652). Total IgG was purified by Protein A affinity chromatography.
Ig Type:	Rabbit IgG
Specificity:	Human ErbB2 / HER2 / CD340
Formulation:	0.2 µm filtered solution in PBS
Storage:	This antibody can be stored at 2°C-8°C for one month without detectable loss of activity. Antibody products are stable for twelve months from date of receipt when stored at -20°C to -80°C. Preservative-Free. Sodium azide is recommended to avoid contamination (final concentration 0.05%-0.1%). It is toxic to cells and should be disposed of properly. Avoid repeated freeze-thaw cycles.
APPLICATIONS	
Applications:	WB,ELISA
RECOMMENDED CONCENTRATION	
Western Blot	WB: 1:500-1:1000
ELISA	ELISA: 1:5000-1:10000 This antibody can be used at 1:5000-1:10000 with the appropriate secondary reagents to detect Human ErbB2.

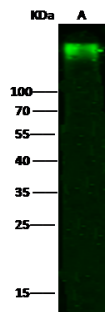
Please Note: Optimal concentrations/dilutions should be determined by the end user.

HER2 / ErbB2 / CD340 Antibody, Rabbit PAb



Sino Biological
Biological Solution Specialist

Catalog Number: 10004-RP03



Anti-ERBB2 rabbit polyclonal antibody at 1:500 dilution

Lane A: SKBR3 Whole Cell Lysate

Lysates/proteins at 30 µg per lane.

Secondary

Goat Anti-Rabbit IgG H&L (Dylight800) at 1/10000 dilution.

Developed using the Odyssey technique.

Performed under reducing conditions.

Predicted band size:195 kDa

Observed band size:195 kDa