

HER2 / ErbB2 / CD340 Antibody, Rabbit MAb



Catalog Number: 10004-R511

EliteRmab® is a registered trademark of Sino Biological Inc.

GENERAL INFORMATION	
Immunogen:	Recombinant Human ErbB2 protein (Catalog#10004-H08H)
Preparation	This antibody was obtained from a rabbit immunized with purified, recombinant Human ErbB2 / HER2 extracellular domain (rh ErbB2; Catalog#10004-H08H; NP_004439.2; Met 1-Thr 652).
Ig Type:	Rabbit IgG
Clone ID:	511
Specificity:	Human ErbB2 / HER2 / CD340
Formulation:	0.2 µm filtered solution in PBS
Storage:	This antibody can be stored at 2°C-8°C for one month without detectable loss of activity. Antibody products are stable for twelve months from date of receipt when stored at -20°C to -80°C. Preservative-Free. Sodium azide is recommended to avoid contamination (final concentration 0.05%-0.1%). It is toxic to cells and should be disposed of properly. Avoid repeated freeze-thaw cycles.
APPLICATIONS	
Applications:	ELISA,ELISA(Cap),FCM,ICC/IF,IF
RECOMMENDED CONCENTRATION	
ICC/IF	ICC/IF: 1:50-1:1000
Flow Cytometry	FCM: 1:25-1:100
ELISA	ELISA: 1:5000-1:10000 This antibody can be used at 1:5000-1:10000 with the appropriate secondary reagents to detect Human ErbB2.
Sandwich ELISA (Capture Ab)	ELISA(Cap): 1:250-1:2000 This antibody will detect Human HER2 / ERBB2 in ELISA pair set (Catalog: # SEKA10004). In a sandwich ELISA, it can be used as capture antibody when paired with (Catalog: # 10004-R205).

Please Note: Optimal concentrations/dilutions should be determined by the end user.

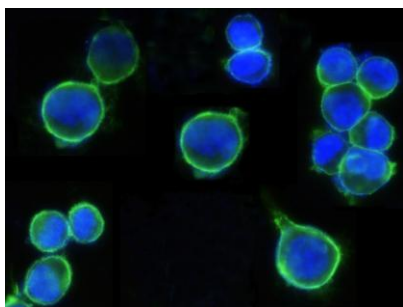
HER2 / ErbB2 / CD340 Antibody, Rabbit MAb

Catalog Number: 10004-R511

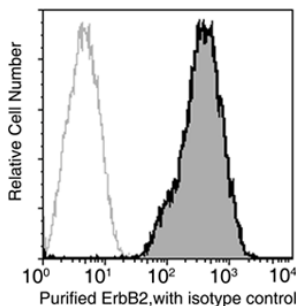


Sino Biological
Biological Solution Specialist

EliteRmab® is a registered trademark of Sino Biological Inc.

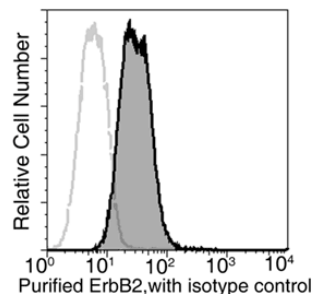


Immunofluorescence staining of Human ErbB2 in SKBR3 cells. Cells were fixed with 4% PFA, blocked with 10% serum, and incubated with Rabbit anti-Human ErbB2 monoclonal antibody (1:100) at 4°C overnight. Then cells were stained with the Alexa Fluor® 488-conjugated Goat Anti-rabbit IgG secondary antibody (green) and counterstained with DAPI (blue). Positive staining was localized to plasma membrane.



Flow cytometric analysis of anti-ErbB2 (10004-R511) on SK-BR3 cells. SK-BR3 cells were detached using 1X trypsin, washed, then stained with Purified Rabbit anti-Human ErbB2. Second step staining with FITC conjugated Goat anti-Rabbit IgG polyclonal antibody (BD Pharmingen™, Cat.No 554020).

Flow cytometry was performed on a BD FACSCalibur flow cytometry system. Please refer to www.sinobiological.com/Flow-Cytometry-FACS-Protocols-a-750.html for technical protocols.



Flow cytometric analysis of anti-ErbB2 (10004-R511) on MCF-7 cells. MCF-7 cells were detached using 1X trypsin, washed, then stained with purified rabbit anti-human ErbB2. Second step staining with FITC conjugated goat anti-rabbit IgG (H+L) polyclonal antibody.

Flow cytometry was performed on a BD FACSCalibur flow cytometry system. Please refer to www.sinobiological.com/Flow-Cytometry-FACS-Protocols-a-750.html for technical protocols.